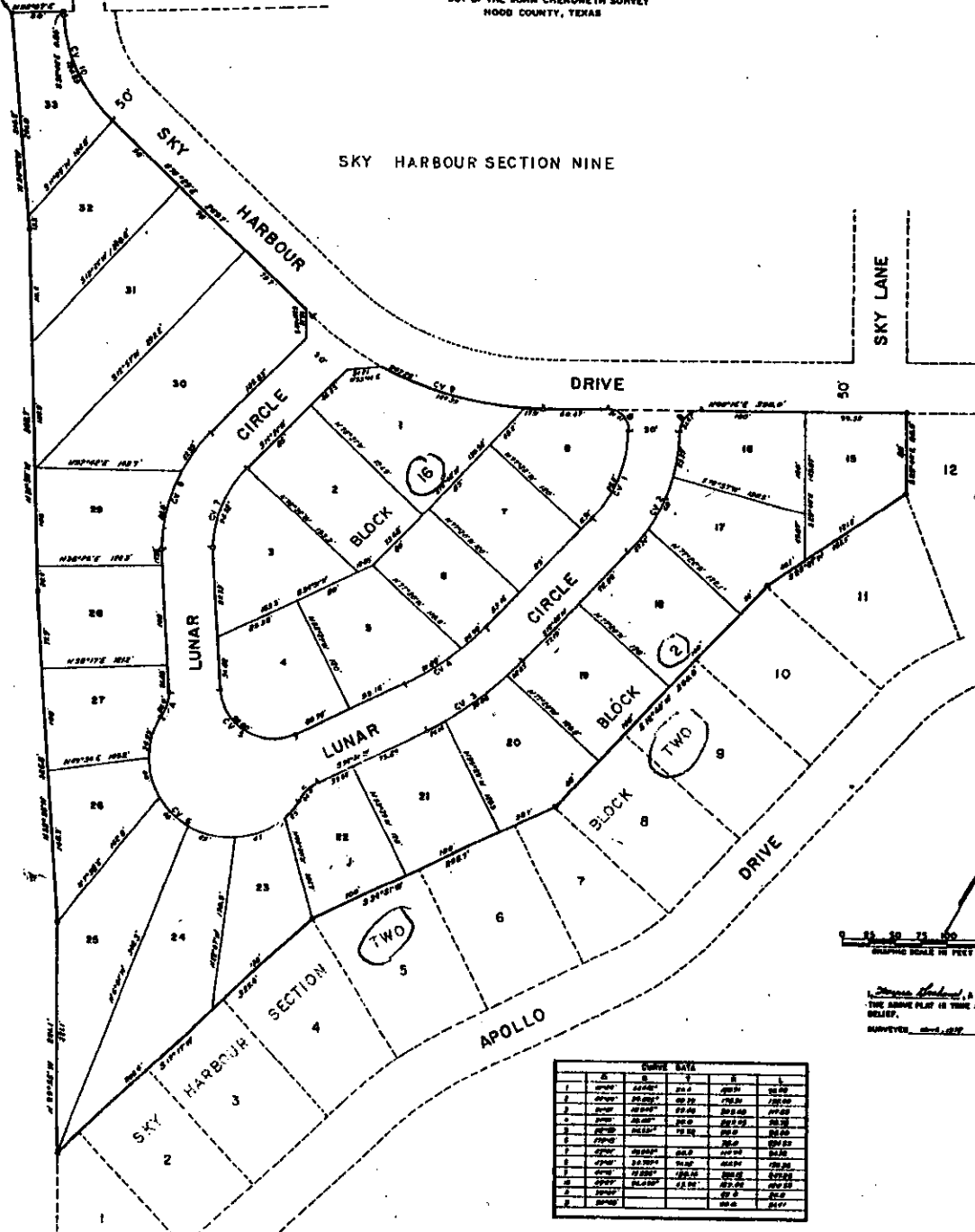


10

SKY HARBOUR
SECTION TEN
OUT OF THE JOHN CHENOWETH SURVEY
HOOD COUNTY, TEXAS

SKY HARBOUR SECTION NINE

10' Harbor Drive and Two'



SECT 2



I, *James H. ...*, a REGISTERED PUBLIC SURVEYOR DO HEREBY CERTIFY THAT THE ABOVE PLAT IS TRUE AND CORRECT TO THE BEST OF MY KNOWLEDGE AND BELIEF.

SURVEYED *...*



LINE	BEARING	DISTANCE	BEARING	DISTANCE
1	S 89° 50' 00" W	20.00	S 89° 50' 00" W	20.00
2	S 89° 50' 00" W	20.00	S 89° 50' 00" W	20.00
3	S 89° 50' 00" W	20.00	S 89° 50' 00" W	20.00
4	S 89° 50' 00" W	20.00	S 89° 50' 00" W	20.00
5	S 89° 50' 00" W	20.00	S 89° 50' 00" W	20.00
6	S 89° 50' 00" W	20.00	S 89° 50' 00" W	20.00
7	S 89° 50' 00" W	20.00	S 89° 50' 00" W	20.00
8	S 89° 50' 00" W	20.00	S 89° 50' 00" W	20.00
9	S 89° 50' 00" W	20.00	S 89° 50' 00" W	20.00
10	S 89° 50' 00" W	20.00	S 89° 50' 00" W	20.00
11	S 89° 50' 00" W	20.00	S 89° 50' 00" W	20.00
12	S 89° 50' 00" W	20.00	S 89° 50' 00" W	20.00
13	S 89° 50' 00" W	20.00	S 89° 50' 00" W	20.00
14	S 89° 50' 00" W	20.00	S 89° 50' 00" W	20.00
15	S 89° 50' 00" W	20.00	S 89° 50' 00" W	20.00
16	S 89° 50' 00" W	20.00	S 89° 50' 00" W	20.00
17	S 89° 50' 00" W	20.00	S 89° 50' 00" W	20.00
18	S 89° 50' 00" W	20.00	S 89° 50' 00" W	20.00
19	S 89° 50' 00" W	20.00	S 89° 50' 00" W	20.00
20	S 89° 50' 00" W	20.00	S 89° 50' 00" W	20.00
21	S 89° 50' 00" W	20.00	S 89° 50' 00" W	20.00
22	S 89° 50' 00" W	20.00	S 89° 50' 00" W	20.00
23	S 89° 50' 00" W	20.00	S 89° 50' 00" W	20.00
24	S 89° 50' 00" W	20.00	S 89° 50' 00" W	20.00
25	S 89° 50' 00" W	20.00	S 89° 50' 00" W	20.00
26	S 89° 50' 00" W	20.00	S 89° 50' 00" W	20.00
27	S 89° 50' 00" W	20.00	S 89° 50' 00" W	20.00
28	S 89° 50' 00" W	20.00	S 89° 50' 00" W	20.00
29	S 89° 50' 00" W	20.00	S 89° 50' 00" W	20.00
30	S 89° 50' 00" W	20.00	S 89° 50' 00" W	20.00
31	S 89° 50' 00" W	20.00	S 89° 50' 00" W	20.00
32	S 89° 50' 00" W	20.00	S 89° 50' 00" W	20.00

APPROVED DATE _____
COMMISSIONERS COURT
HOOD COUNTY, TEXAS

COUNTY CLERK
COUNTY JUDGE